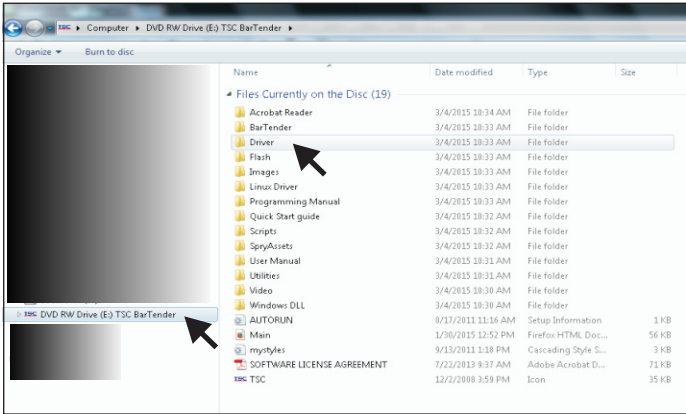
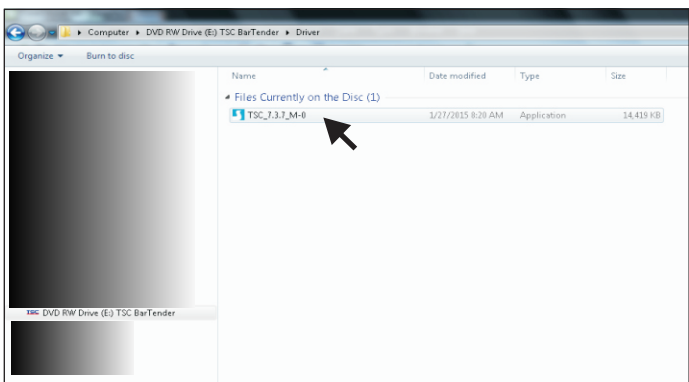


CARA INSTAL PRINTER TSC P200 / TA - 210

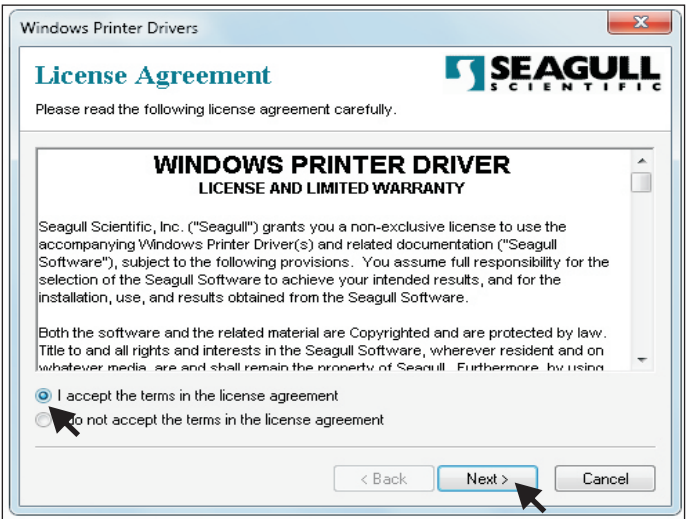
1. PRINTER DALAM KEADAAN OFF (MATI)
KEMUDIAN KLIK CD DRIVE DAN PILIH DRIVER



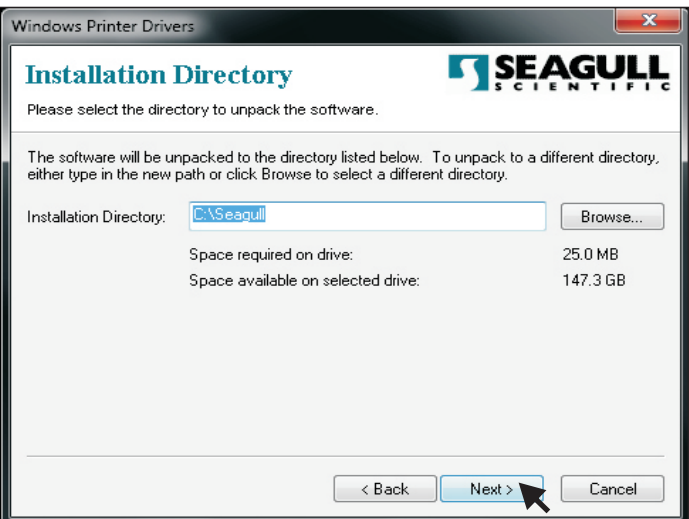
2. KLIK MENU SOFTWARENYA (TSC_7.3.7_M-0)



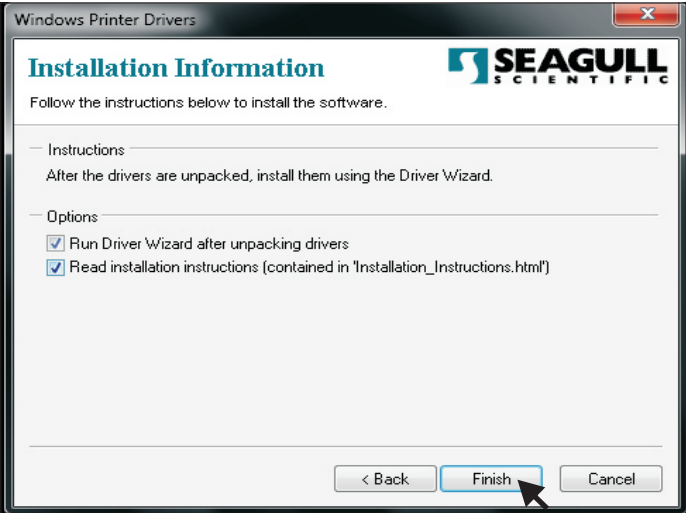
3. KLIK NEXT (SEPERTI GAMBAR)



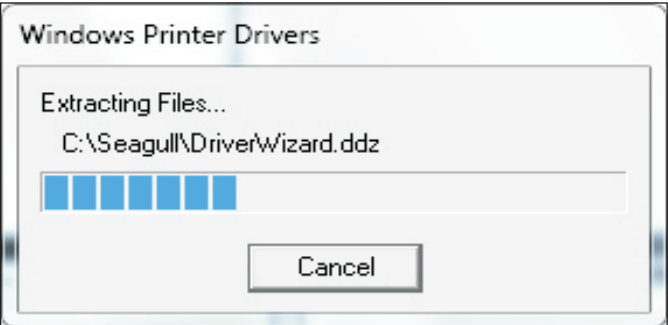
4. KLIK NEXT (SEPERTI GAMBAR)



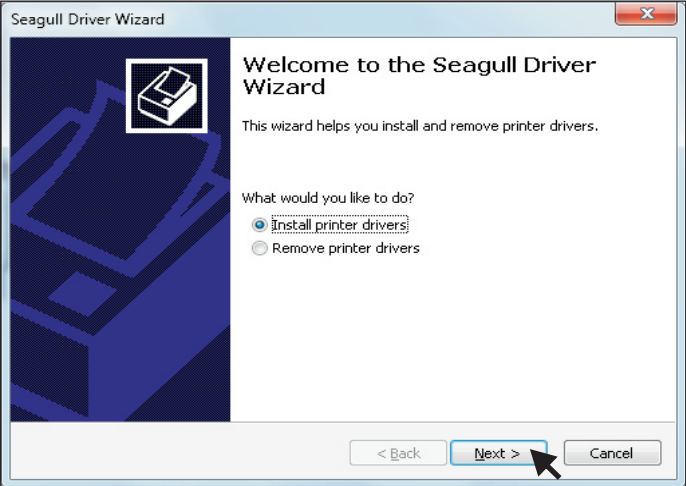
5. KLIK NEXT (SEPERTI GAMBAR)



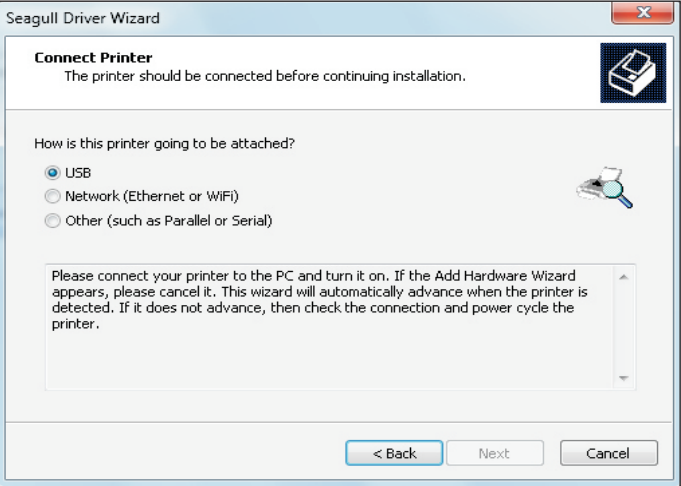
6. SEDANG PROSES



7. KLIK NEXT

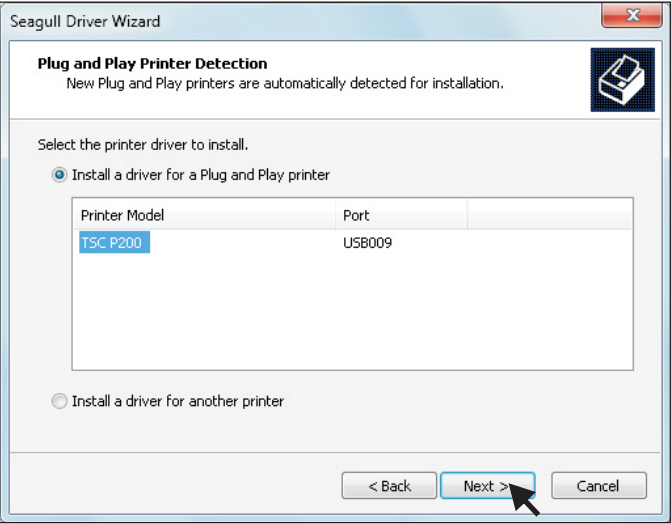


8. PADA TAHAP INI PRINTER HARUS DIHIDUPKAN (ON)

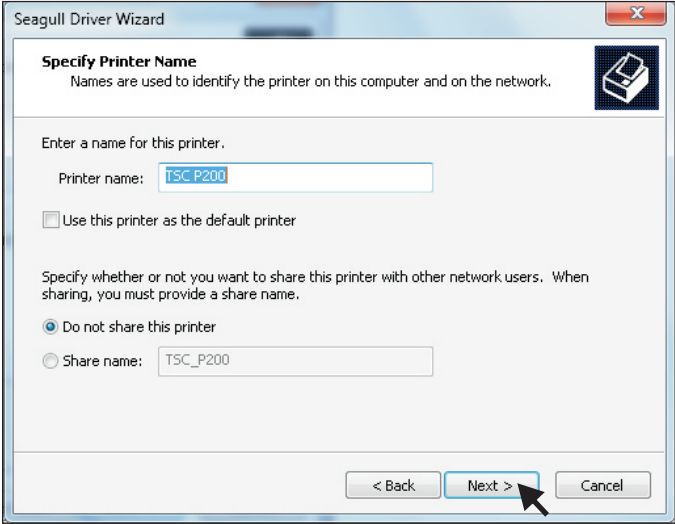


CARA INSTAL PRINTER TSC P200

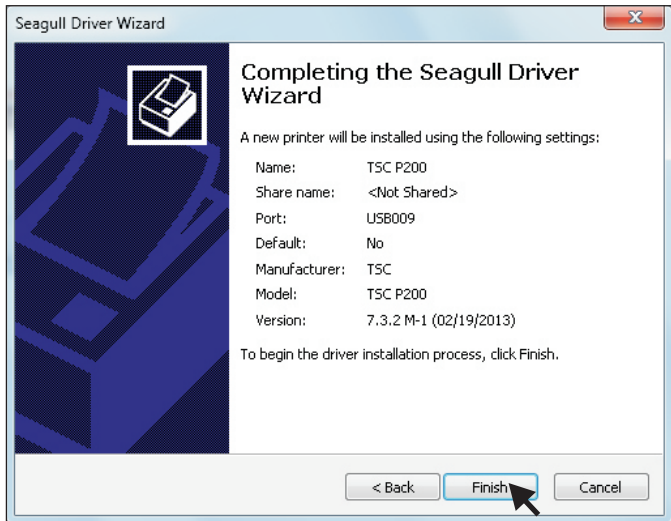
9. KLIK NEXT



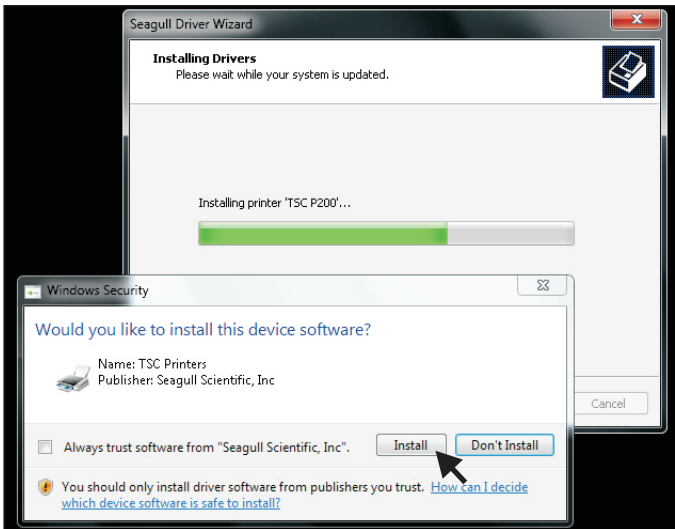
10. KLIK NEXT



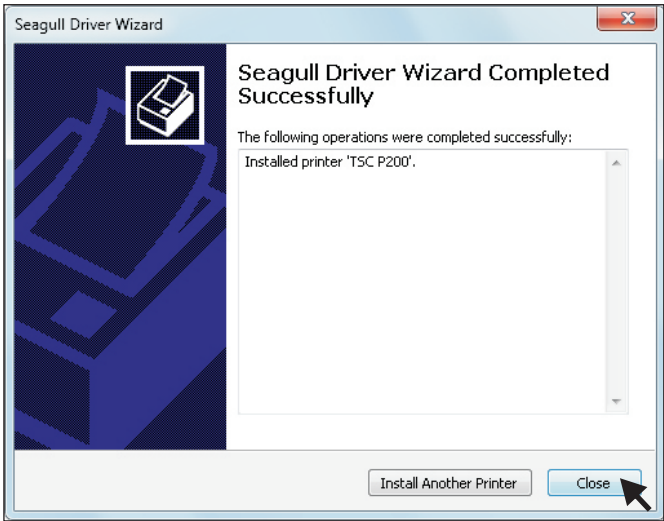
11. KLIK FINISH



12. KLIK INSTALL



13. KLIK CLOSE

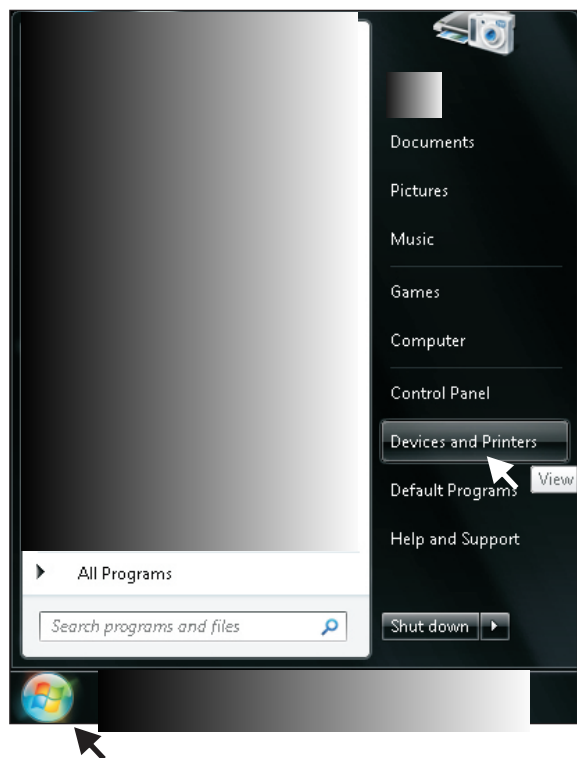


KETERANGAN :

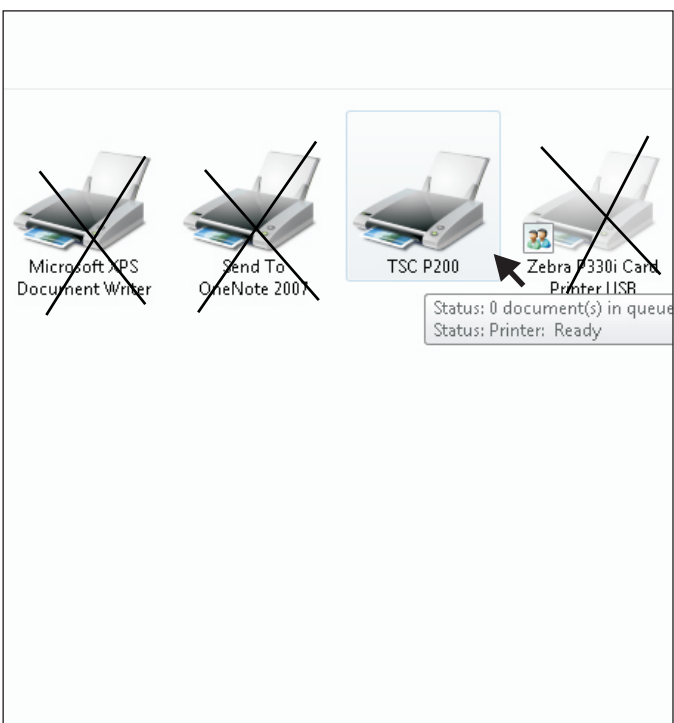
PRINTER SUDAH TERINSTALL DAN SUDAH DAPAT DIGUNAKAN.
UNTUK MENGETAHUI PRINTER SUDAH SIAP (READY) IKUTI
LANGKAH - LANGKAH BERIKUT.

CARA INSTAL PRINTER TSC P200

1. KLIK START LALU PILIH DEVICES AND PRINTERS

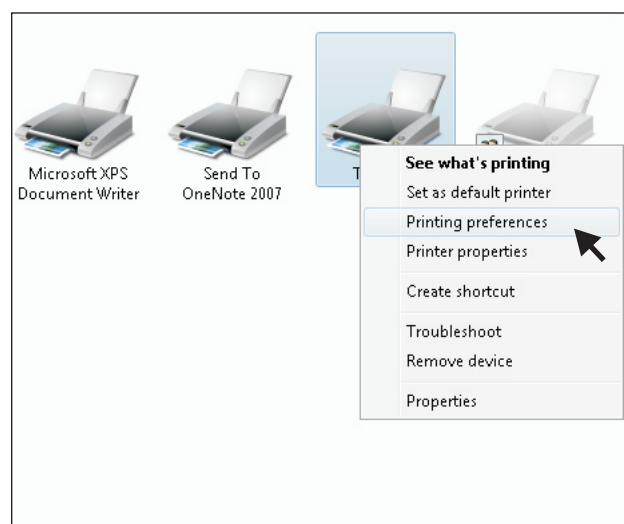


2. SYMBOL PRINTER MENYALA, STATUS READY

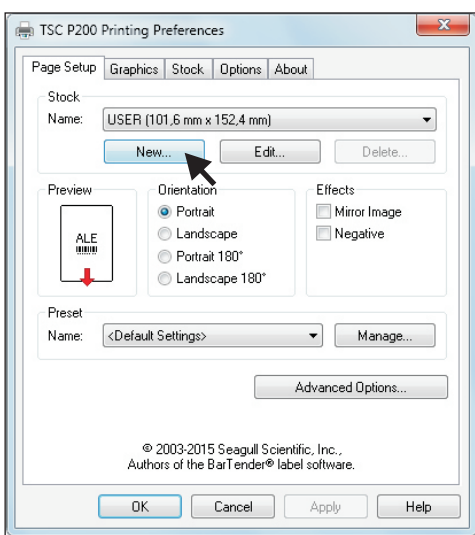


CARA PRINT TEST PAGE DAN SETTING UKURAN TSC P200

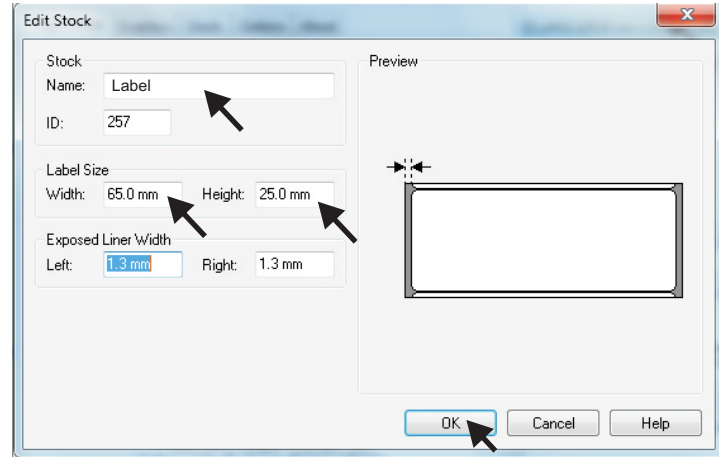
1. KLIK KANAN LALU PILIH PRINTING PREFERENCES



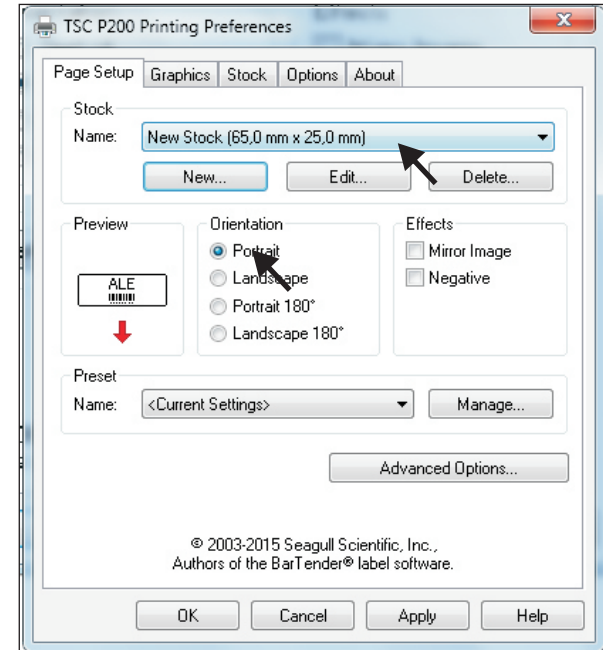
2. KLIK NEW (UNTUK SETING LABEL 65X25mm)



3. IKUTI UKURAN DAN NAMA SEPERTI DIGAMBAR LALU OKE

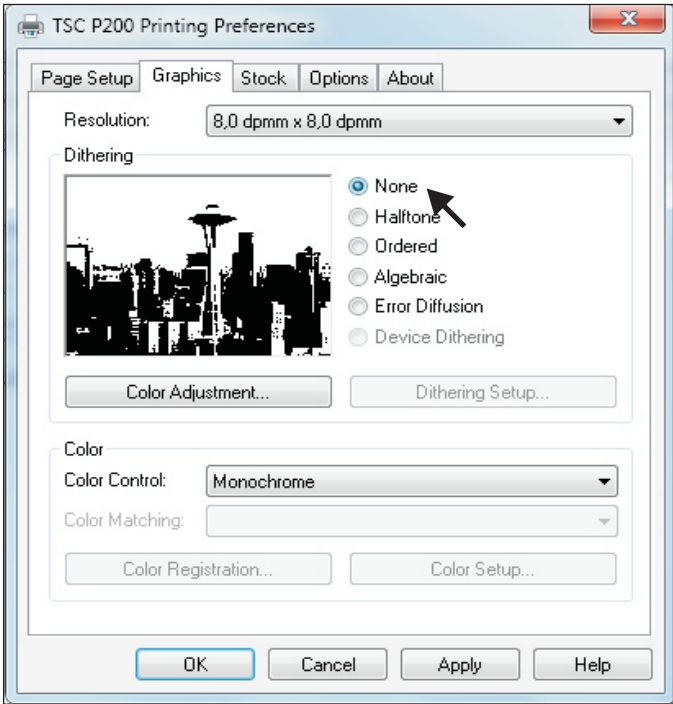


4. UKURAN SUDAH BERUBAH DAN PILIH PORTRAIT

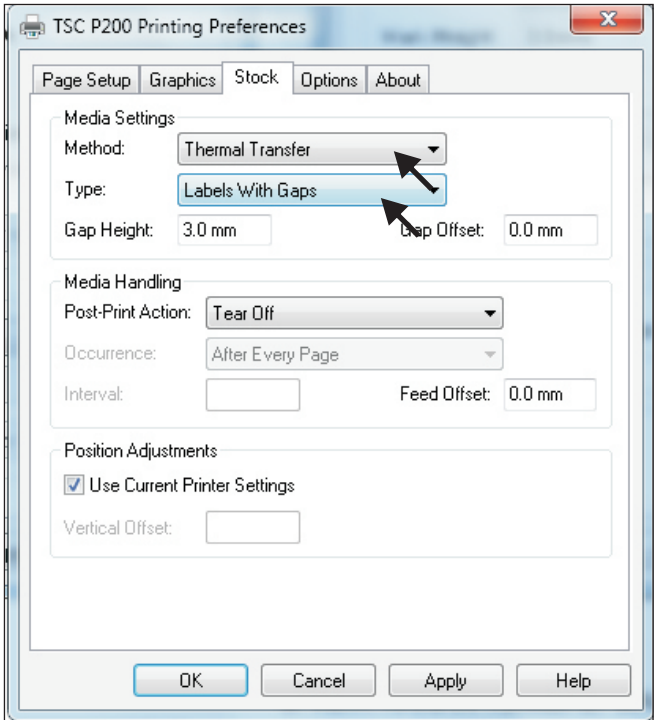


CARA PRINT TEST PAGE DAN SETTING UKURAN TSC P200

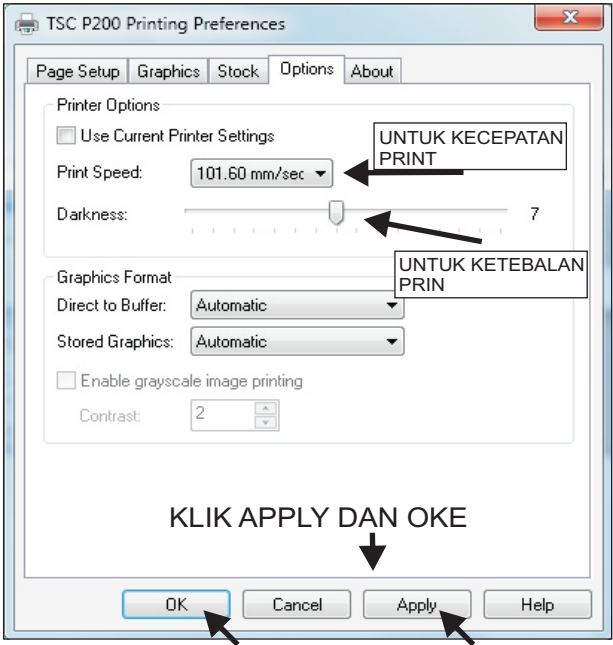
5. KLIK MENU GRAPHICS LALU PILIH NONE



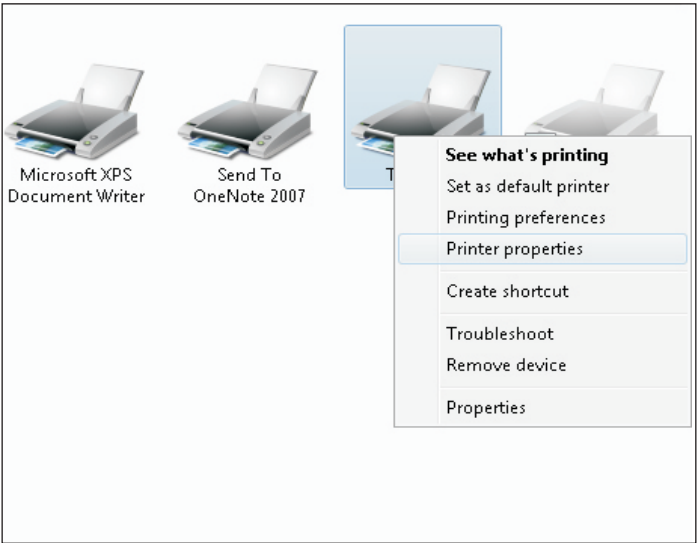
6. KLIK MENU STOCK DAN IKUTI KETERANGAN SEPERTI GAMBAR DIBAWAH



7. KLIK MENU OPTIONS



8. KLIK KANAN KEMBALI DAN PILIH PRINTER PROPERTIES



9. KLIK PRINT TEST PAGE

